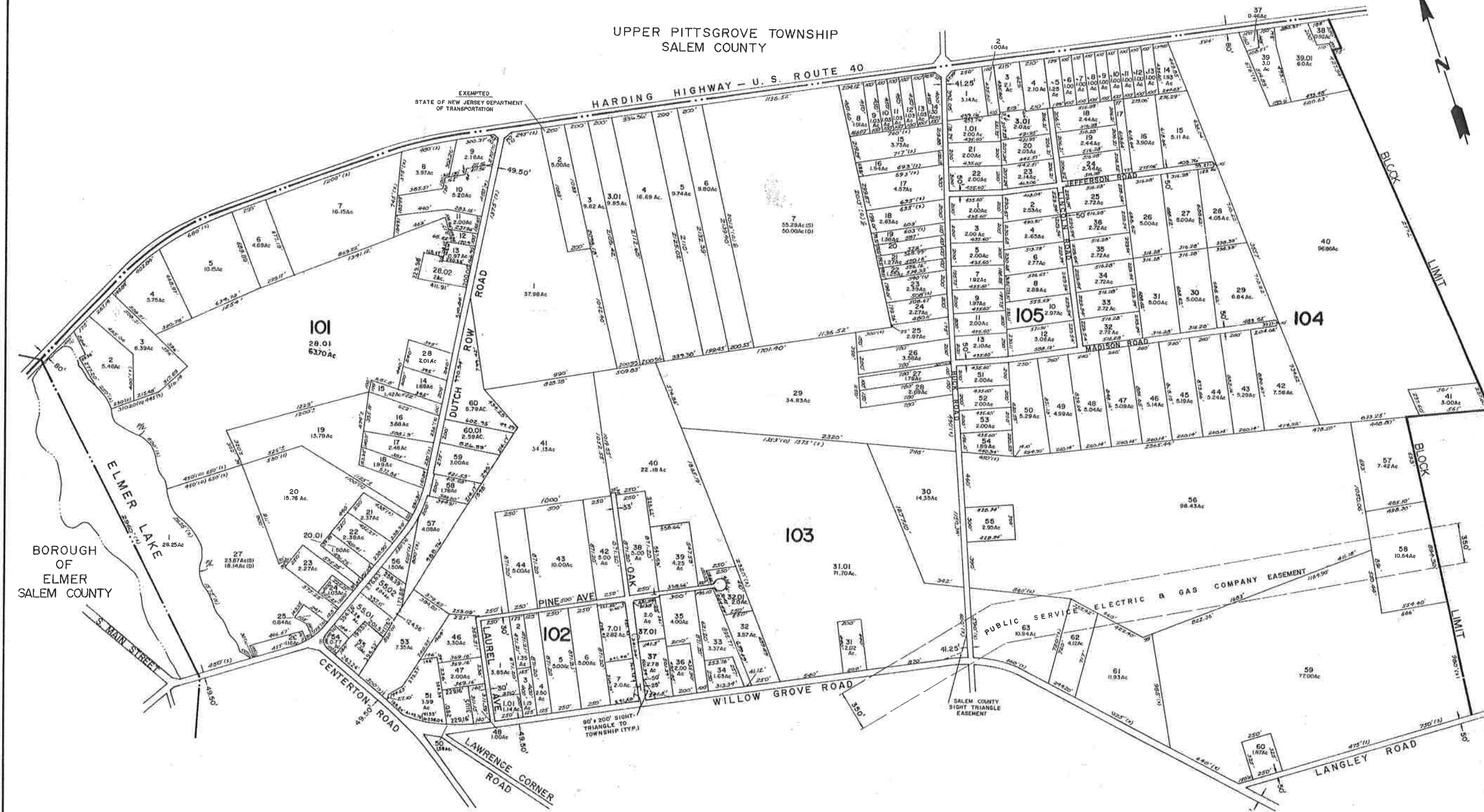


UPPER PITTSGROVE TOWNSHIP
SALEM COUNTY



BOROUGH OF
ELMER
SALEM COUNTY

SHEET II

SHEET IO

SHEET 2

NEW JERSEY DEPARTMENT OF TREASURY
OFFICE OF TAXATION
MUNICIPAL TAX MAPS SECTION
FOR THE YEAR 1986
DATE OF ASSESSMENT: 12/31/85
DATE OF MAP: 8/1986

Albert A. Fralinger, Jr.

ALBERT A. FRALINGER, JR., P.E. & L.S.
N.J. LIC. # 12588, TOWNSHIP ENGINEER
529 SHILOH PIKE, BRIDGETON, N.J. 08302

TAX ASSESSMENT MAP
PITTSGROVE TOWNSHIP
SALEM COUNTY, NEW JERSEY
SCALE: 1" = 400' AUGUST 1986
ALBERT A. FRALINGER, JR., P.E. & L.S.
N.J. LIC. # 12588, TOWNSHIP ENGINEER
529 SHILOH PIKE, BRIDGETON, N.J. 08302