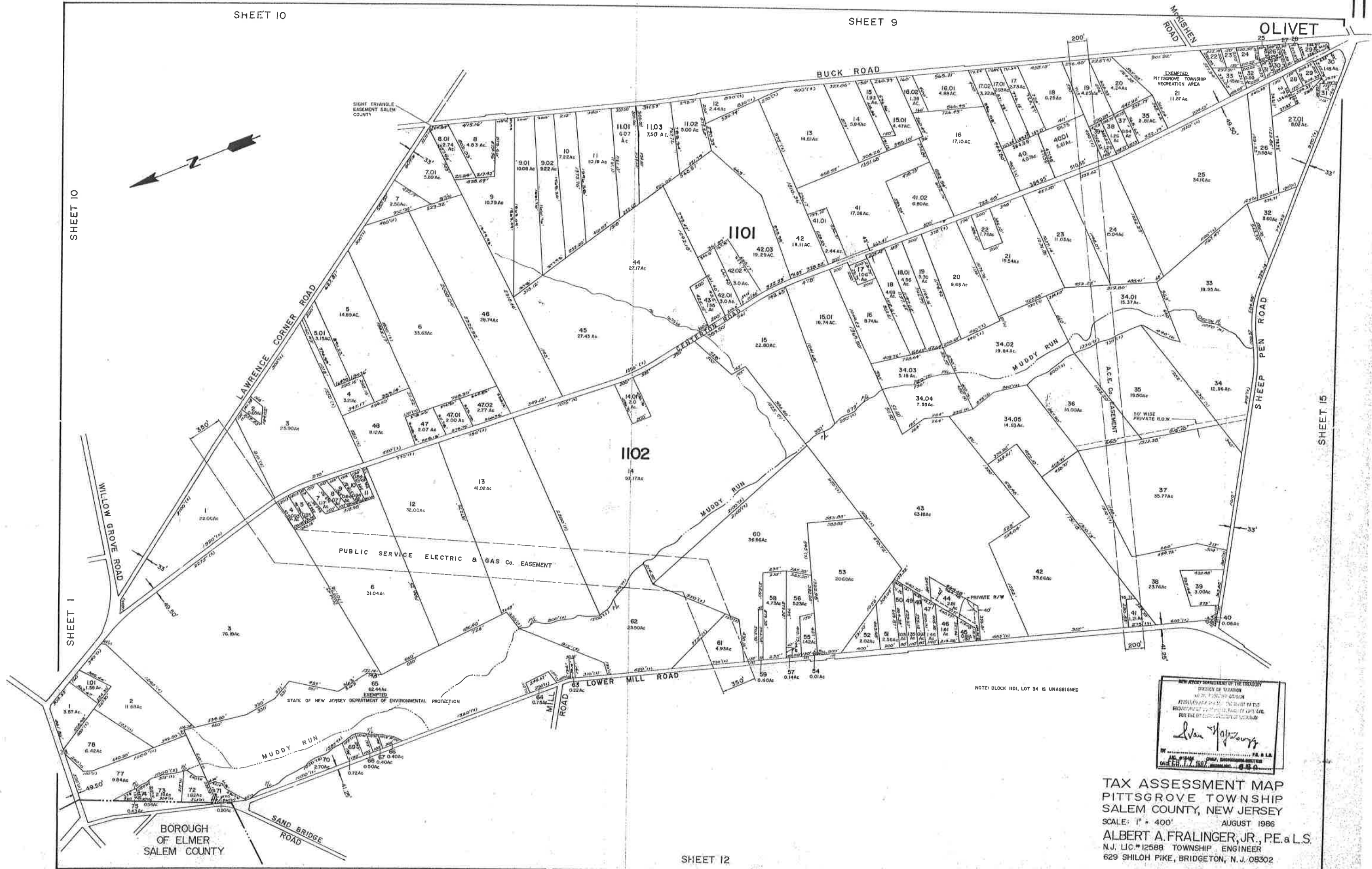


SHEET 10

SHEET 1

SHEET 15



NOTE: BLOCK 1101, LOT 34 IS UNASSIGNED

NEW JERSEY DEPARTMENT OF THE TREASURY  
 DIVISION OF TAXATION  
 ATTORNEY GENERAL'S OFFICE  
 PROPOSED MAP FOR THE YEAR 1988  
 FOR THE COUNTY OF SALEM COUNTY  
*Alan H. Johnson*  
 BY \_\_\_\_\_ P.E. & L.S.  
 DATE 8/11/88

TAX ASSESSMENT MAP  
 PITTS GROVE TOWNSHIP  
 SALEM COUNTY, NEW JERSEY  
 SCALE: 1" = 400' AUGUST 1988  
 ALBERT A. FRALINGER, JR., P.E. & L.S.  
 N.J. LIC. #12588 TOWNSHIP ENGINEER  
 629 SHILOH PIKE, BRIDGETON, N. J. 08302