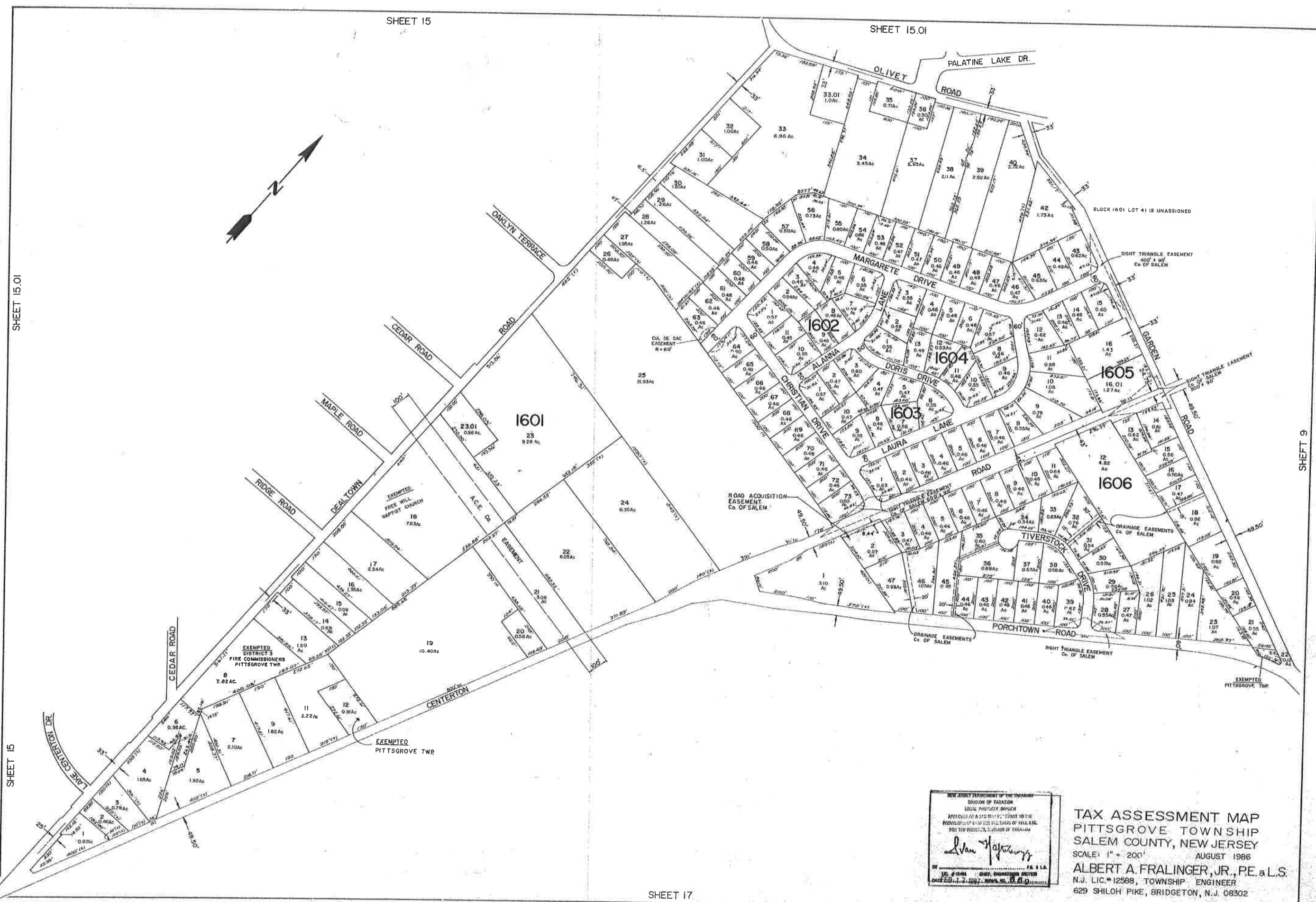


SHEET 15.01

SHEET 9

SHEET 15

SHEET 17



NEW JERSEY DEPARTMENT OF THE TREASURY
 DIVISION OF TAXATION
 LOCAL PROPERTY TAXES
 APPROVED AS A TRUE AND CORRECT COPY TO THE
 RECORDS OF THE COUNTY CLERK OF SALEM COUNTY
 FOR THE DISTRICT OF SALEM COUNTY

Albert A. Fralinger, Jr.

BY: *Albert A. Fralinger, Jr.* P.E. & L.S.
 LICENSE NO. 12588, TOWNSHIP ENGINEER

TAX ASSESSMENT MAP
 PITTSBORO TOWNSHIP
 SALEM COUNTY, NEW JERSEY
 SCALE: 1" = 200'
 AUGUST 1986
 ALBERT A. FRALINGER, JR., P.E. & L.S.
 N.J. LIC. # 12588, TOWNSHIP ENGINEER
 629 SHILOH PIKE, BRIDGETON, N.J. 08302