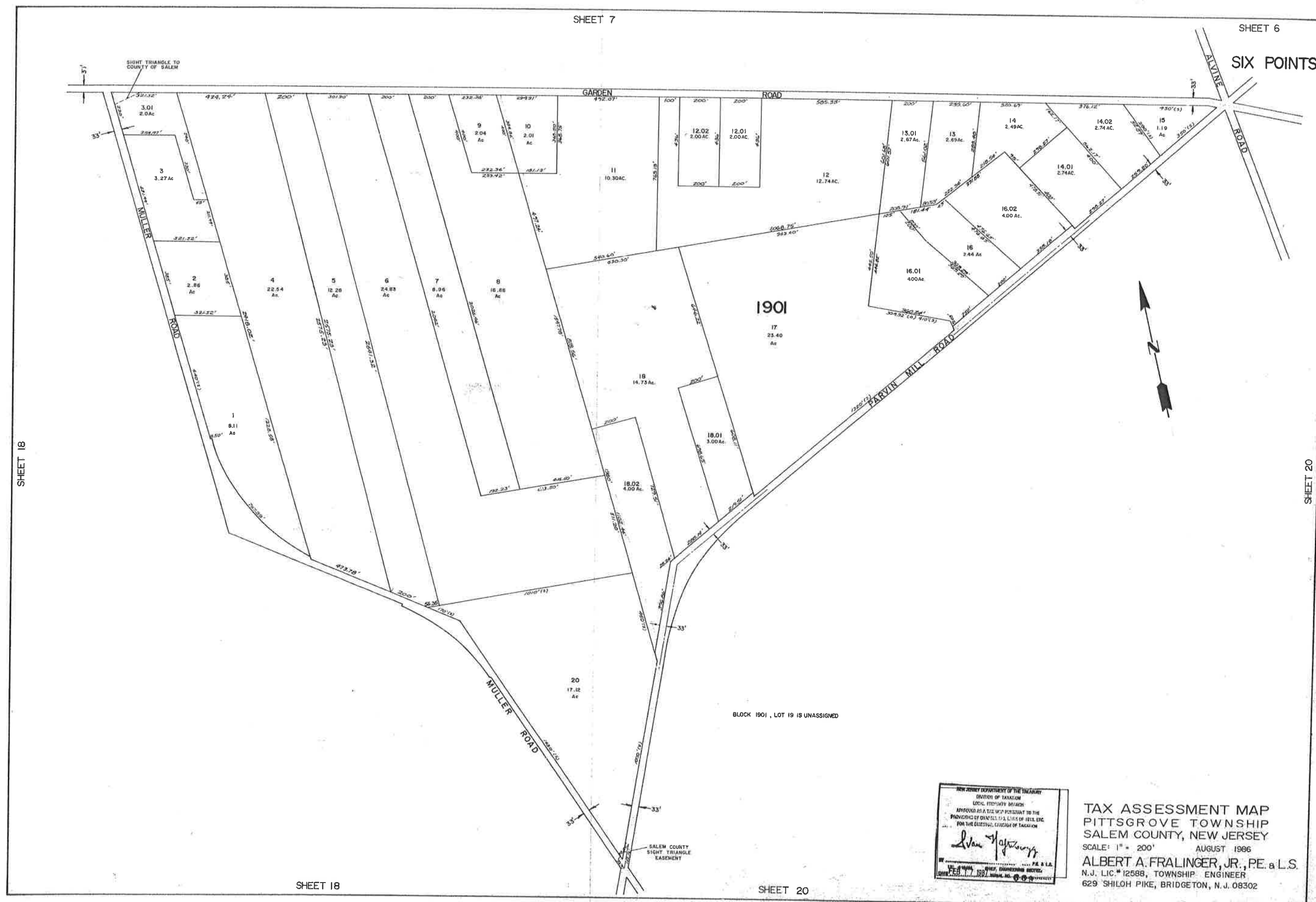


SIX POINTS

SHEET 18

SHEET 20



SHEET 18

SHEET 20

NEW JERSEY DEPARTMENT OF THE TREASURY  
 DIVISION OF TAXATION  
 LOCAL FIELDWORK BRANCH  
 APPROVED AS A TAX MAP PURSUANT TO THE  
 PROVISIONS OF CHAPTER 123, L.R.S. OF 1981, ETC.  
 FOR THE DIRECTOR, DIVISION OF TAXATION

*Alan H. Johnson*

ALAN H. JOHNSON, CIVIL ENGINEERING DESIGNER  
 LICENSE NO. 11-11897

TAX ASSESSMENT MAP  
 PITTSBORO TOWNSHIP  
 SALEM COUNTY, NEW JERSEY  
 SCALE: 1" = 200' AUGUST 1986  
 ALBERT A. FRALINGER, JR., P.E. & L.S.  
 N.J. LIC. #12598, TOWNSHIP ENGINEER  
 629 SHILOH PIKE, BRIDGETON, N.J. 08302