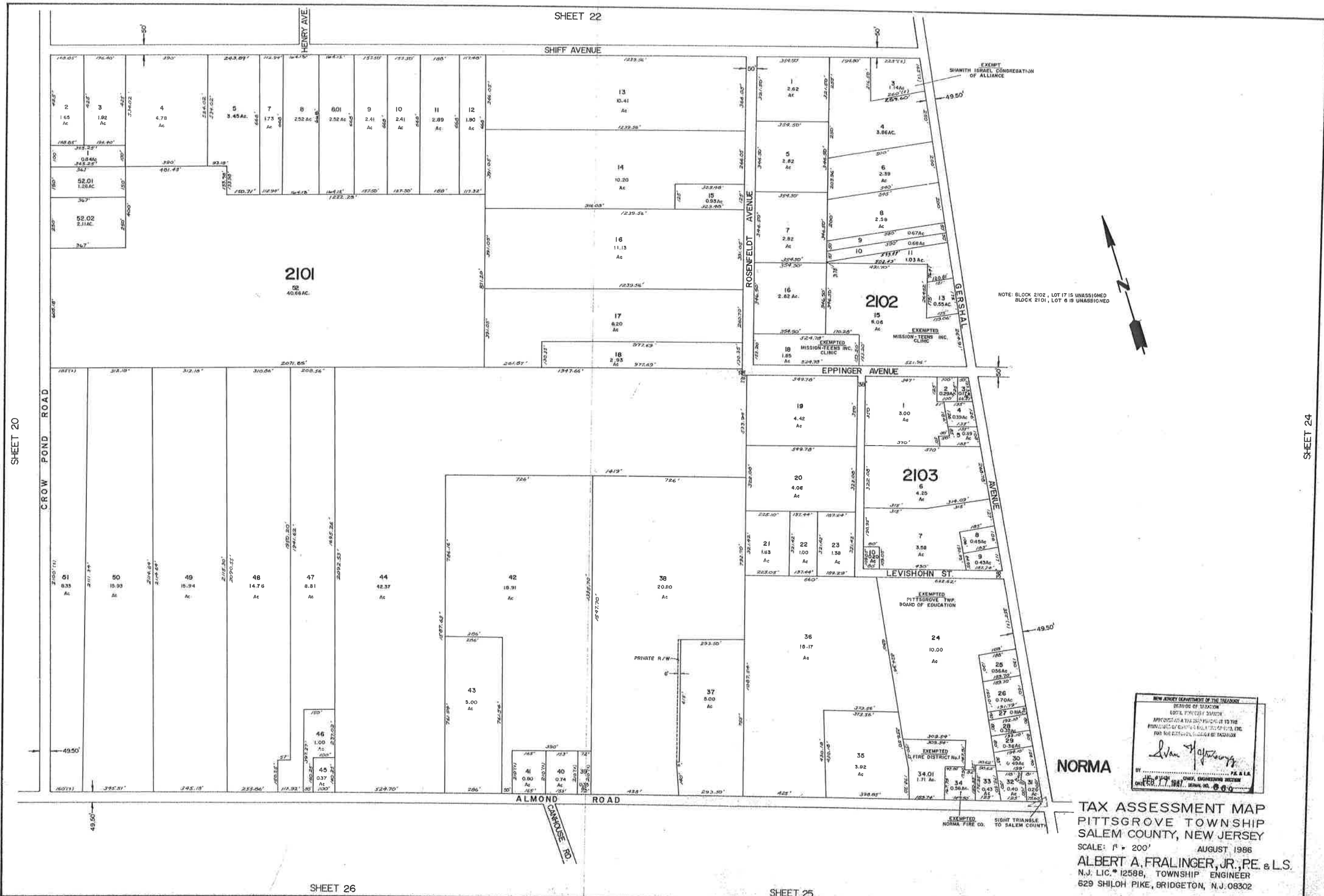


SHEET 20

SHEET 24



NOTE: BLOCK 2102, LOT 17 IS UNASSIGNED
BLOCK 2101, LOT 6 IS UNASSIGNED

NEW JERSEY DEPARTMENT OF THE TREASURY
DIVISION OF TAXATION
LOCAL PROPERTY TAXATION
APPROVED AS A TAX MAP SUBJECT TO THE
PROVISIONS OF CHAPTER 122 OF TITLE 54C
FOR THE DISTRICT OF TAXATION

Norma

BY: *Norma* P.E. & L.S.
ONE CIV. E.N.G. SERIAL NO. 000

NORMA

TAX ASSESSMENT MAP
PITTSGROVE TOWNSHIP
SALEM COUNTY, NEW JERSEY
SCALE: 1" = 200'
AUGUST 1986
ALBERT A. FRALINGER, JR., P.E. & L.S.
N.J. LIC. # 12588, TOWNSHIP ENGINEER
629 SHILOH PIKE, BRIDGETON, N.J. 08302

2101
5
40.66 AC.

2102
15
8.06 AC.

2103
5
4.25 AC.