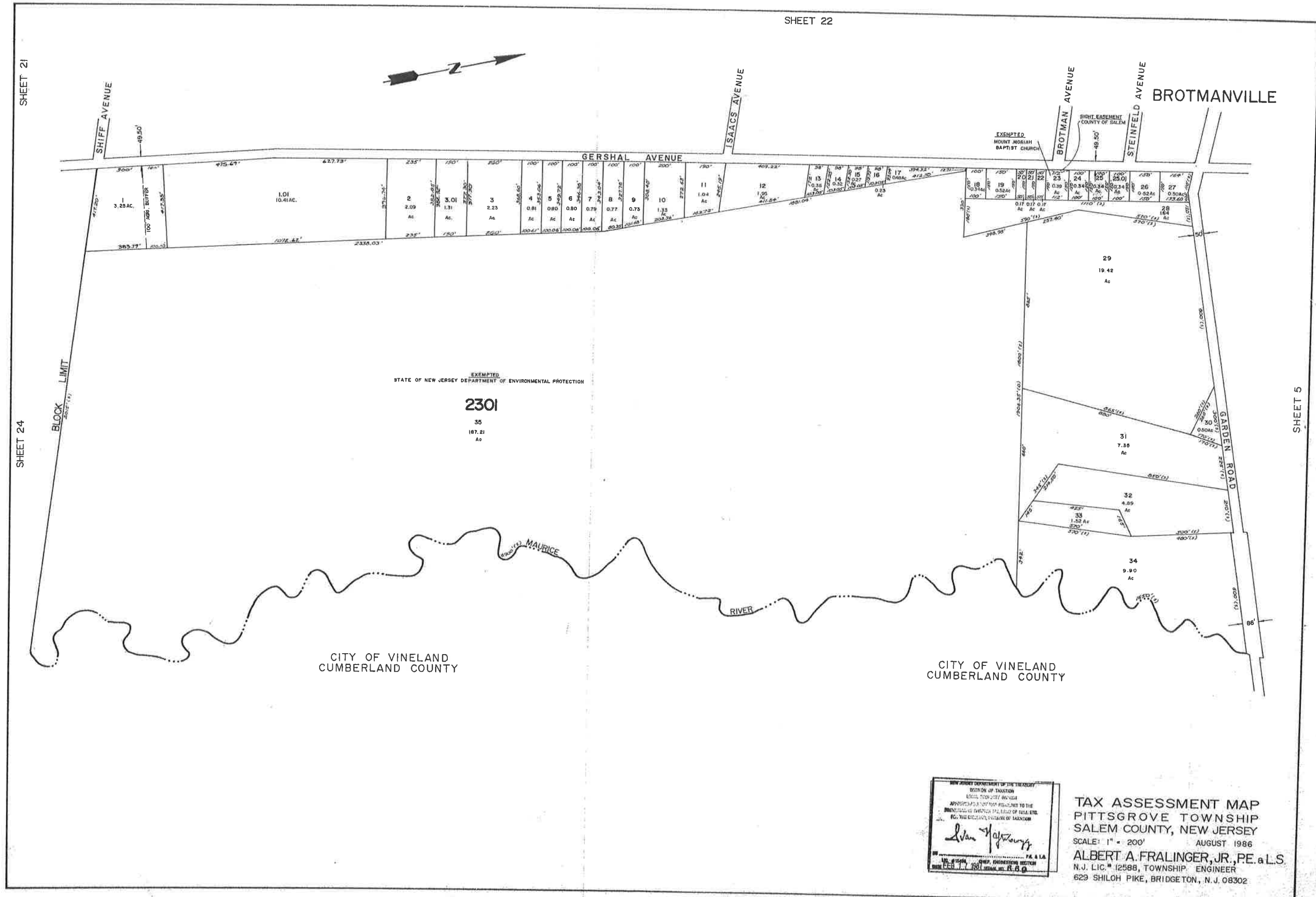


SHEET 21
SHEET 24

SHEET 5



EXEMPTED
STATE OF NEW JERSEY DEPARTMENT OF ENVIRONMENTAL PROTECTION
2301
35
187.21
Ac

NEW JERSEY DEPARTMENT OF THE TREASURY
DIVISION OF TAXATION
LOCAL TAXES DIVISION
APPROVED AS TO THE ACCURACY OF THE
DIMENSIONS AND AREA OF LOTS, ETC.
FOR THE PURPOSES OF TAXATION
Alan H. Hays
ALAN H. HAYS, JR., P.E. & L.S.
N.J. LIC. # 12588, TOWNSHIP ENGINEER
FEB. 17, 1987

TAX ASSESSMENT MAP
PITTSBORO TOWNSHIP
SALEM COUNTY, NEW JERSEY
SCALE: 1" = 200'
AUGUST 1986
ALBERT A. FRALINGER, JR., P.E. & L.S.
N.J. LIC. # 12588, TOWNSHIP ENGINEER
629 SHILOH PIKE, BRIDGETON, N.J. 08302