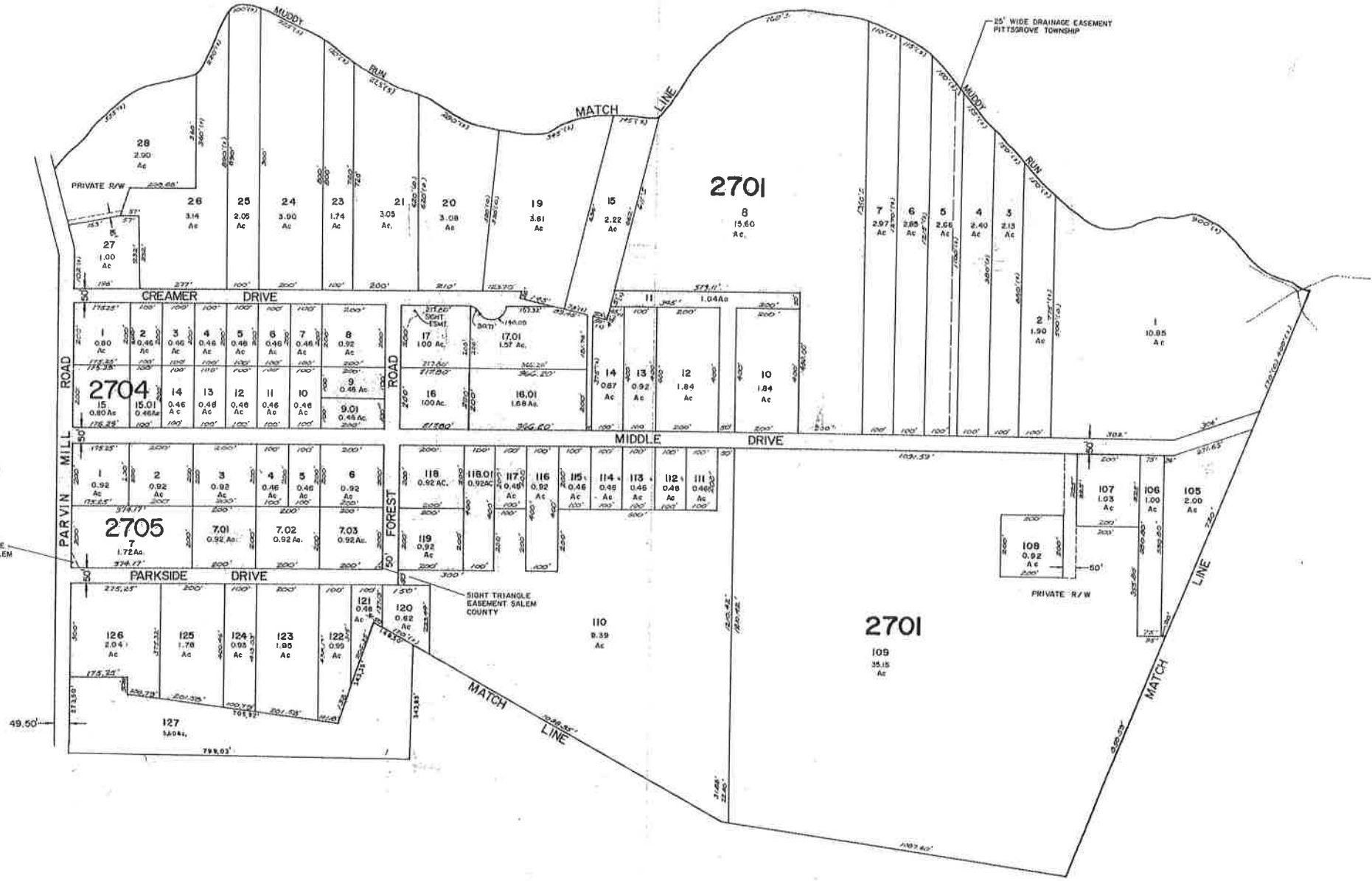




SHEET 28

SHEET 27.02

NOTE: BLOCK 2701, LOT 18 IS UNASSIGNED



SIGHT TRIANGLE EASEMENT SALEM COUNTY

SIGHT TRIANGLE EASEMENT SALEM COUNTY

PRIVATE R/W

NEW JERSEY DEPARTMENT OF THE TREASURY
 DIVISION OF TAXATION
 LOCAL PROPERTY TAXES
 APPROVED AS A TAX MAP PRESENT TO THE
 MEMBERS OF COUNTY PANELS OF 1984, ETC.
 FOR THE DIVISION OF TAXATION

Albert A. Fralinger, Jr.

BY: *Albert A. Fralinger, Jr.* P.E. & L.S.
 L.S. # 15424 CIVIL ENGINEERING SECTION
 DATE: FEB. 17, 1987

TAX ASSESSMENT MAP
 PITTSGROVE TOWNSHIP
 SALEM COUNTY, NEW JERSEY
 SCALE: 1" = 200' AUGUST 1986
 ALBERT A. FRALINGER, JR., P.E. & L.S.
 N.J. LIC. #12588, TOWNSHIP ENGINEER
 629 SHILOH PIKE, BRIDGETON, N.J. 08302