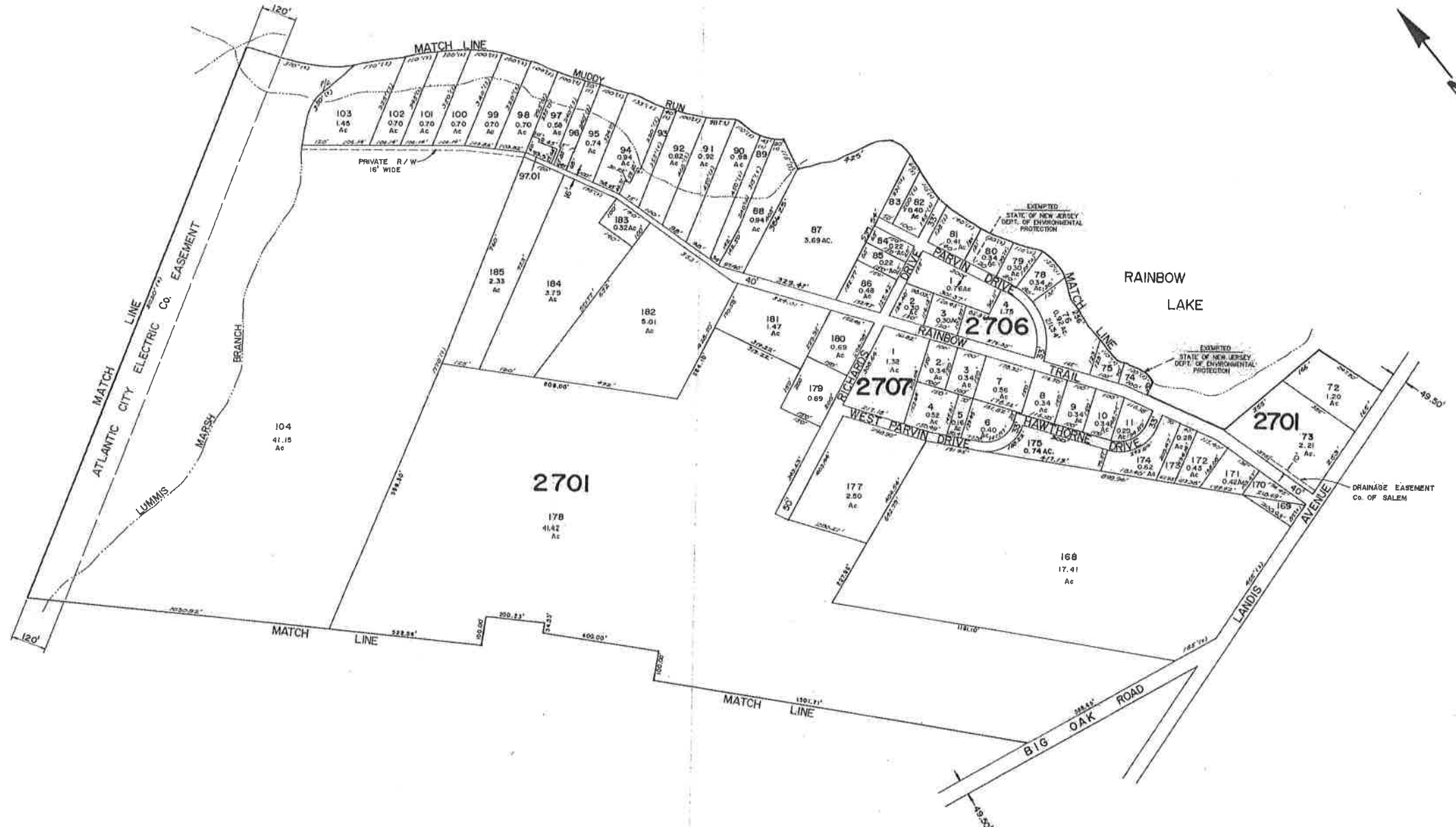


SHEET 27.01

SHEET 30



NEW JERSEY DEPARTMENT OF THE TREASURY
 DIVISION OF TAXATION
 1987L PROPERTY BRANCH
 APPROVED AS A TAX MAP PURSUANT TO THE
 PROVISIONS OF CHAPTER 128, L.A.C. OF 1915, ETC.
 FOR THE COUNTY CLERK, DIVISION OF TAXATION

Alan H. Hays

ALAN H. HAYS, P.E. & L.S.
 L.S. # 10448 CIVIL ENGINEERING DIVISION
 6000 FREDERICK STREET, BRIDGE TON, N.J. 08302

TAX ASSESSMENT MAP
 PITTSBORO TOWNSHIP
 SALEM COUNTY, NEW JERSEY
 SCALE: 1" = 200' AUGUST 1986
 ALBERT A. FRALINGER, JR., P.E. & L.S.
 N.J. LIC. # 12588, TOWNSHIP ENGINEER
 629 SHILOH PIKE, BRIDGE TON, N.J. 08302