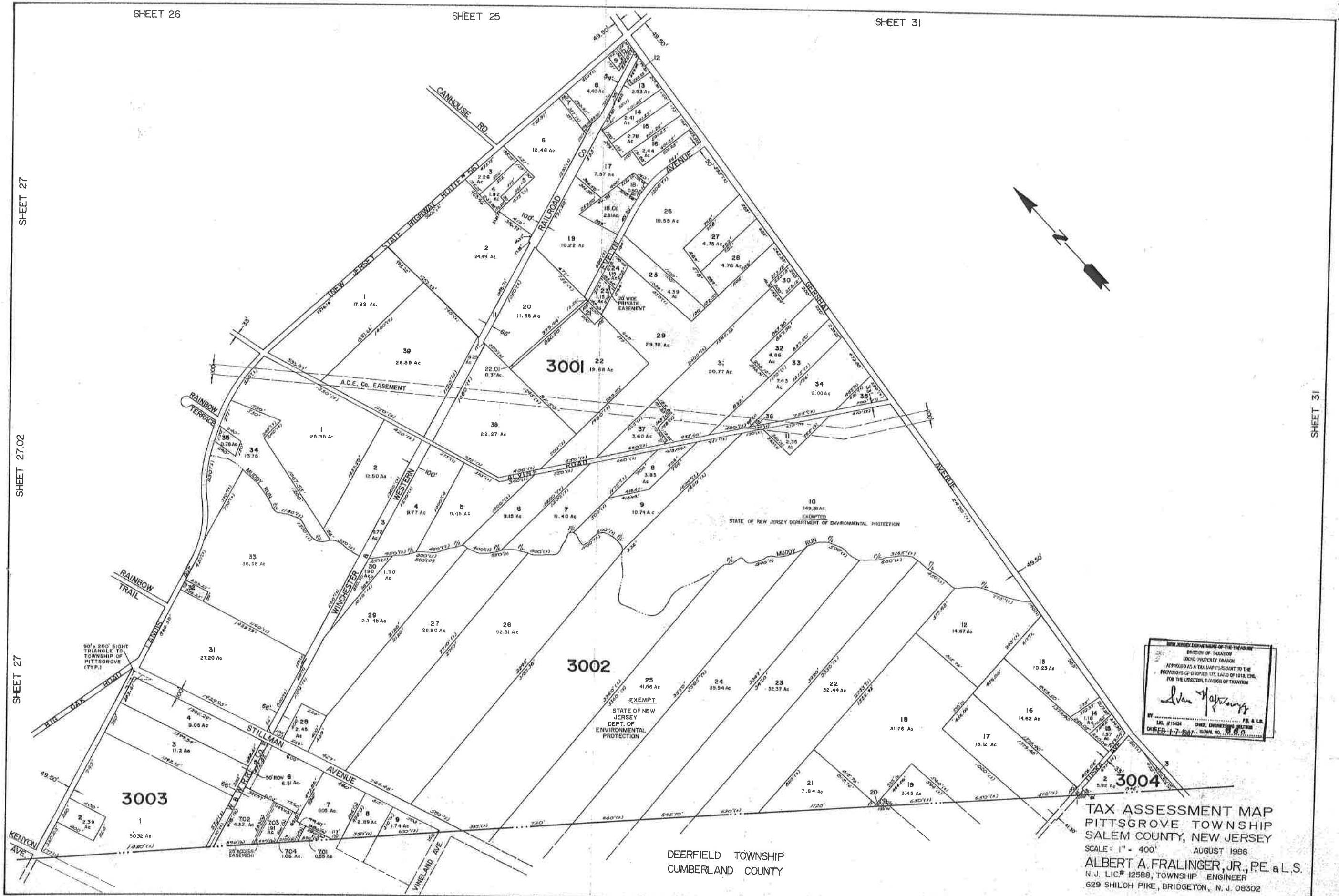


SHEET 27

SHEET 27.02

SHEET 27

SHEET 31



NEW JERSEY DEPARTMENT OF THE TREASURY  
 DIVISION OF TAXATION  
 LOCAL PROPERTY GRANTOR  
 APPROVED AS A TAX MAP PURSUANT TO THE  
 PROVISIONS OF CHAPTER 174, LAWS OF 1978, ETC.  
 FOR THE USE OF THE CLERK, CLERK OF TAXATION  
*Alan Hoffmann*  
 BY: \_\_\_\_\_ P.E. & L.S.  
 DATE: 7-7-88 CHIEF ENGINEER SECTION  
 DRAWING NO. 8.8.0.

**TAX ASSESSMENT MAP**  
**PITTSBORO TOWNSHIP**  
**SALEM COUNTY, NEW JERSEY**  
 SCALE: 1" = 400'  
 AUGUST 1988  
**ALBERT A. FRALINGER, JR., P.E. & L.S.**  
 N.J. LIC# 12588, TOWNSHIP ENGINEER  
 629 SHILOH PIKE, BRIDGETON, N. J. 08302

DEERFIELD TOWNSHIP  
 CUMBERLAND COUNTY