

SHEET 22

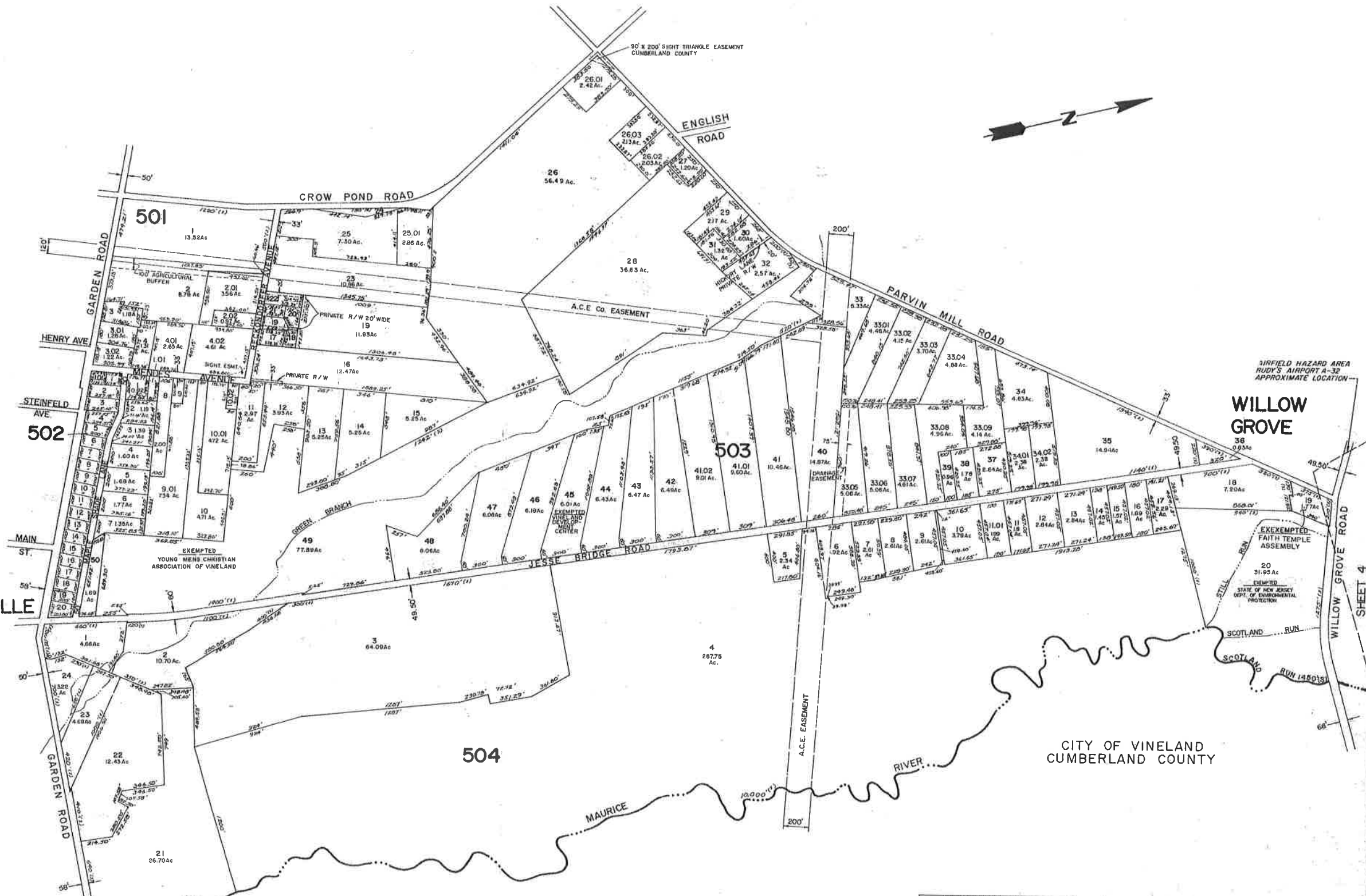
SHEET 23

BROTMANVILLE

WILLOW GROVE

CITY OF VINELAND CUMBERLAND COUNTY

CITY OF VINELAND CUMBERLAND COUNTY



NEW JERSEY DEPARTMENT OF THE TREASURY  
 DIVISION OF TAXATION  
 STATE TAX COLLECTOR  
 STATE OF NEW JERSEY  
 DIVISION OF TAXATION  
 STATE OF NEW JERSEY  
 DIVISION OF TAXATION  
 STATE OF NEW JERSEY

*Alan H. Johnson*

BY \_\_\_\_\_  
 DIVISION OF TAXATION  
 STATE OF NEW JERSEY

**TAX ASSESSMENT MAP**  
**PITTSBORO TOWNSHIP**  
**SALEM COUNTY, NEW JERSEY**  
 SCALE: 1" = 400'  
 AUGUST 1986  
**ALBERT A. FRALINGER, JR., P.E. & L.S.**  
 N.J. LIC. # 12560, TOWNSHIP ENGINEER  
 629 SHILOH PIKE, BRIDGETON, N.J. 08302